

CS_90um_10um

Si chip 3mm x 3mm

Si₃N₄ membrane: 250nm thick, window size 1mm x 1mm

Plating base: Cr/Au/Cr (5nm/10nm/3nm)

CS material: Au

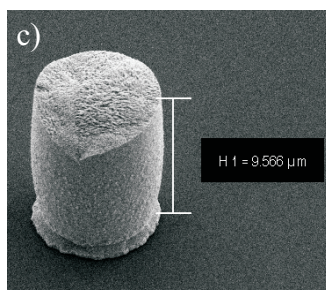
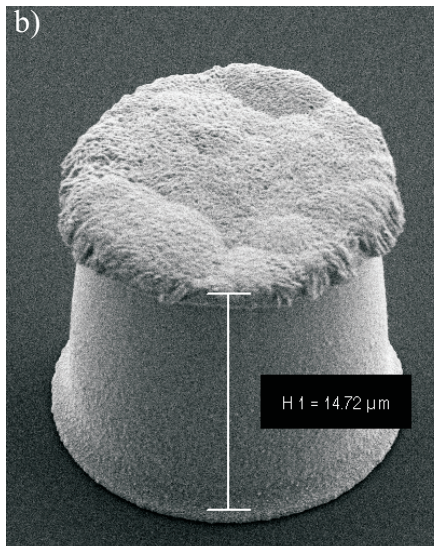
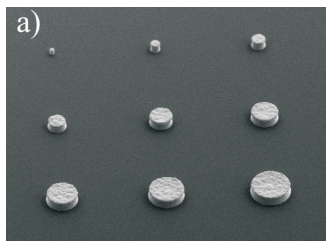
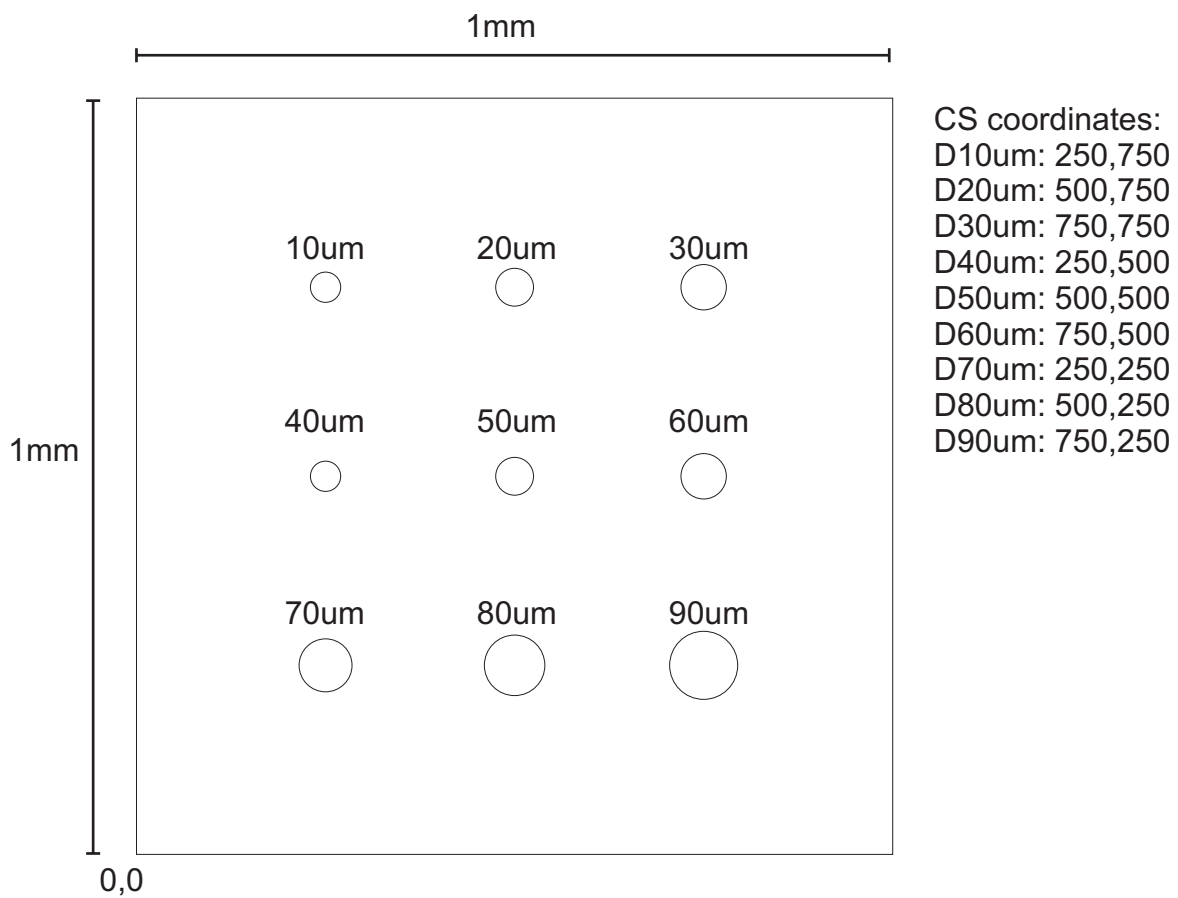
CS thickness: ~20um

Exposure: VI131022a_CS90um_10um_layout.job

Mounted to OMNY 14.11.2013 sample s2

Mounted to CSAXS holder 7.03.2014 sample s4

Layout



SEM-images of the sample s4 CS layout (a), D=20um (b), and D=10um (c).