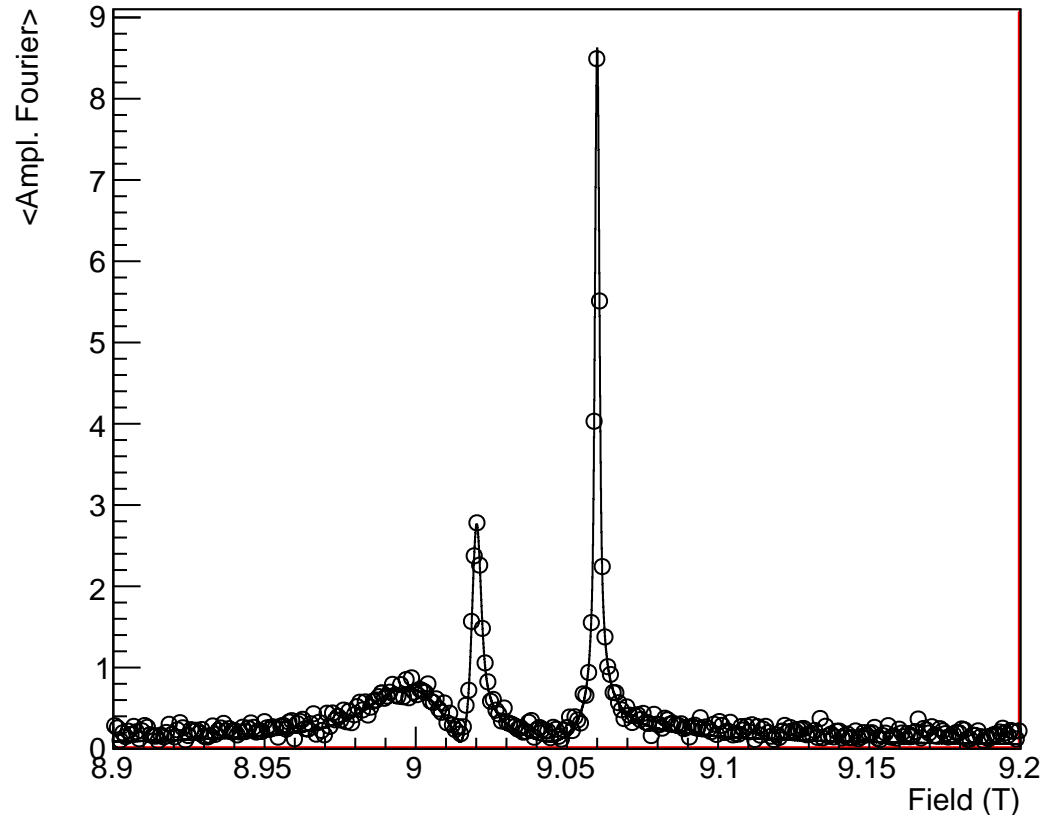


# 08019 - test



1	Frac0	0.5021	0.0042
2	Rate0	7.06	0.12
3	Field0	90001.2	1.4
4	Frac1	0.1979	0.0028
5	Rate1	0.746	0.014
6	Field1	90199.91	0.17
7	Rate2	0.2483	0.0038
8	Field2	90599.977	0.047
9	Asy_L	0.2546	0.0027
10	Phase_L	6.26	0.56
11	N0_L	1079.97	0.63
12	Bkg_L	1.854	0.098
13	Asy_R	0.2542	0.0027
14	Phase_R	185.64	0.58
15	N0_R	1022.24	0.61
16	Bkg_R	2.675	0.097
17	Asy_T	0.2567	0.0027
18	Phase_T	95.88	0.57
19	N0_T	1013.94	0.61
20	Bkg_T	2.327	0.096
21	Asy_B	0.2570	0.0026
22	Phase_B	275.10	0.56
23	N0_B	1075.88	0.63
24	Bkg_B	2.640	0.099

```

asymmetry fun1
simpleGss 2
TFieldCos map2 fun4
+
asymmetry fun2
simpleGss 5
TFieldCos map2 fun5
+
asymmetry fun3
simpleGss 7
TFieldCos map2 fun6

fun1 = map1 * par1
fun2 = map1 * par4
fun3 = map1 * ((1.0 - par1) - par4)
fun4 = par3 * gamma_mu
fun5 = par6 * gamma_mu
fun6 = par8 * gamma_mu
    
```

musrfit: 2016-01-20, 08:42:07, maxLH = 1406930.6000000001, NDF = 1310700, maxLH/NDF = 1.0734192416266117

○	08019,T=1.00K,B=40.00T,E=??,virtual
□	08019,T=1.00K,B=40.00T,E=??,virtual
△	08019,T=1.00K,B=40.00T,E=??,virtual
◇	08019,T=1.00K,B=40.00T,E=??,virtual